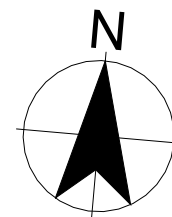
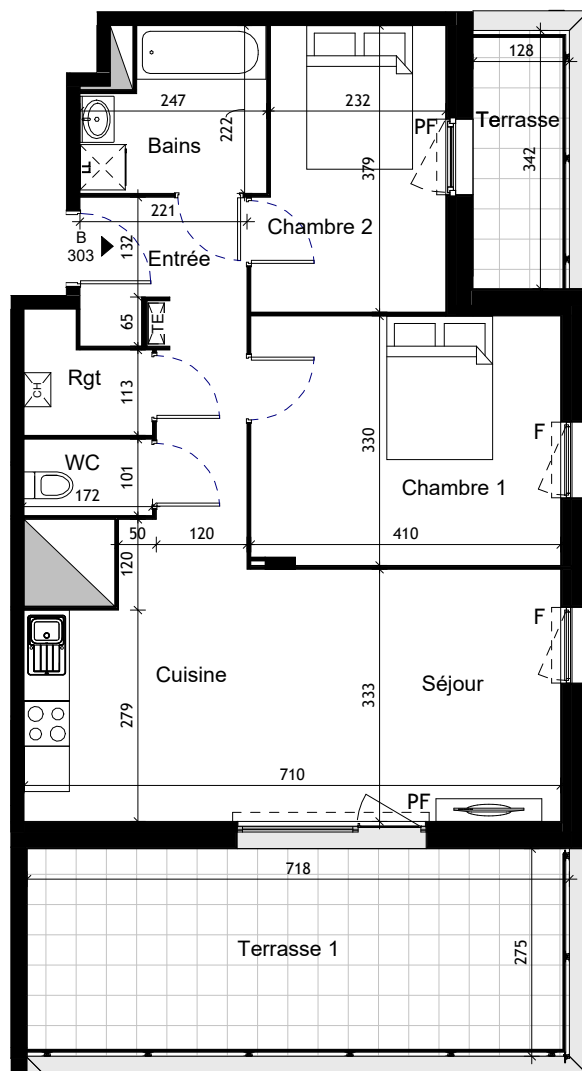
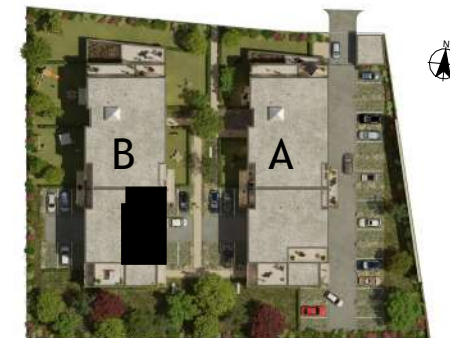


Duo d'Alys



Bâtiment B
Niveau R+3



3 pièces - B303

Surfaces Habitables

| | |
|---------------------------|----------------------------|
| Entrée + Séjour + Cuisine | 31.00 m ² |
| Chambre 1 | 13.50 m ² |
| Chambre 2 | 9.20 m ² |
| Salle de Bains | 4.80 m ² |
| Rangement | 2.30 m ² |
| WC | 1.70 m ² |
| Total Habitable | 62.50 m² |

| | |
|------------|----------------------|
| Terrasse 1 | 20.00 m ² |
| Terrasse 2 | 4.50 m ² |



 **PICHET**

Index F - Plan modifié le 24/05/2024