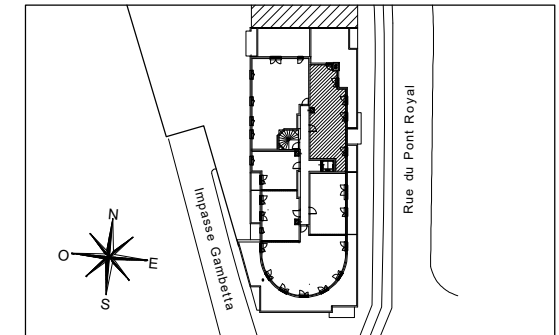


# GAMBETTA

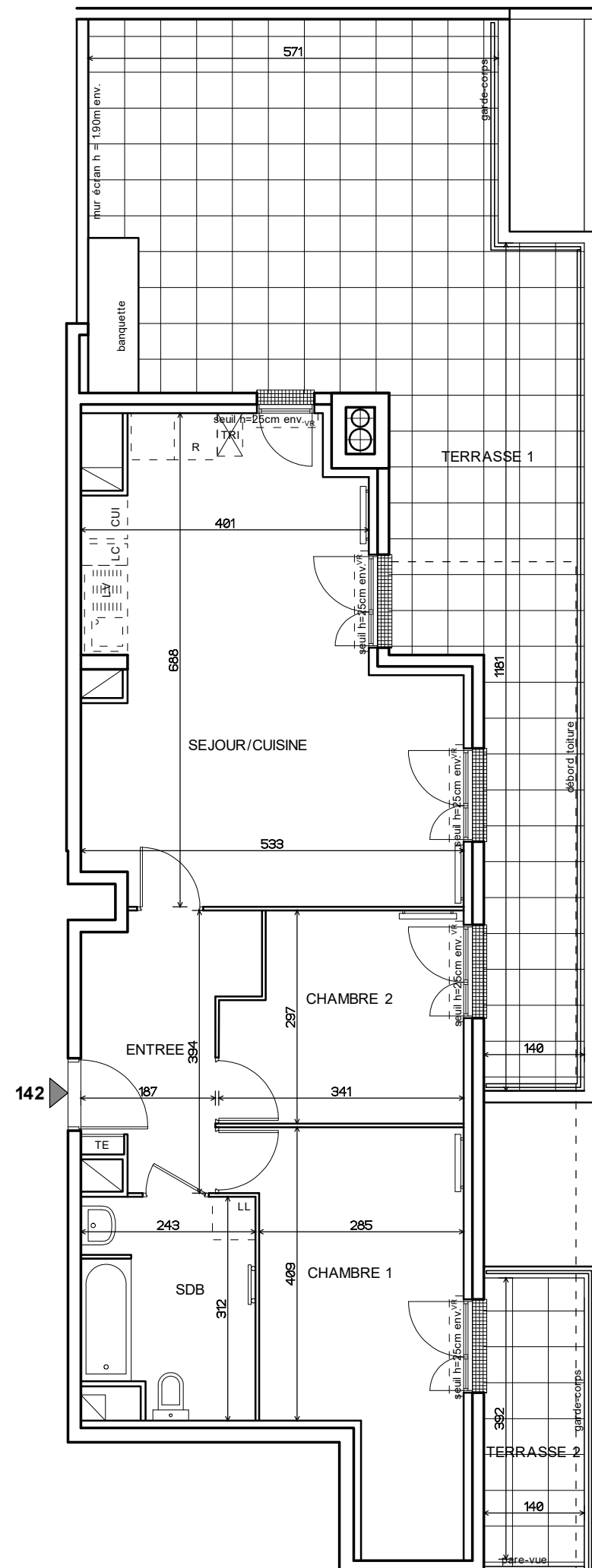
RUE DU PONT ROYAL  
IMPASSE GAMBETTA  
60180 - NOGENT-SUR-OISE



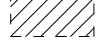
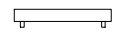
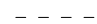

## HALL 100

Appartement de 3 pièces  
n° 142 au 4e étage

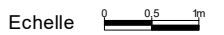
ENTREE	7.59m <sup>2</sup>
SEJOUR/COUISINE	29.78m <sup>2</sup>
CHAMBRE 1	14.96m <sup>2</sup>
CHAMBRE 2	9.31m <sup>2</sup>
SALLE DE BAINS	7.05m <sup>2</sup>
<b>SURFACE TOTALE HABITABLE</b>	<b>68.69m<sup>2</sup></b>
TERRASSE 1	49.17m <sup>2</sup>
TERRASSE 2	5.63m <sup>2</sup>
<b>SURFACE TOTALE PRIVATIVE</b>	<b>123.49m<sup>2</sup></b>



LEGENDE :

LL	LAVE-LINGE	CUI	BLOC CUISSON
LV	LAVE-VAISSELLE	F	REFRIGERATEUR
TRI	TRI SELECTIF	LC	LINEAIRE COMPLEMENTAIRE
AV	ALLEGE VITREE	VR	VOLET ROULANT
GC	GARDE-CORPS	ETEL	ESPACE TECHNIQUE ELECTRIQUE DU LOGT.
	SOFFITE		RADIATEUR
	RETOMBEE DE POUTRE		SECHE-SERV.

Hauteur sous plafond des pièces principales sauf mention particulière : 2.50m

Echelle		Date	19.01.2024	Indice	0
---------	---------------------------------------------------------------------------------------	------	------------	--------	---